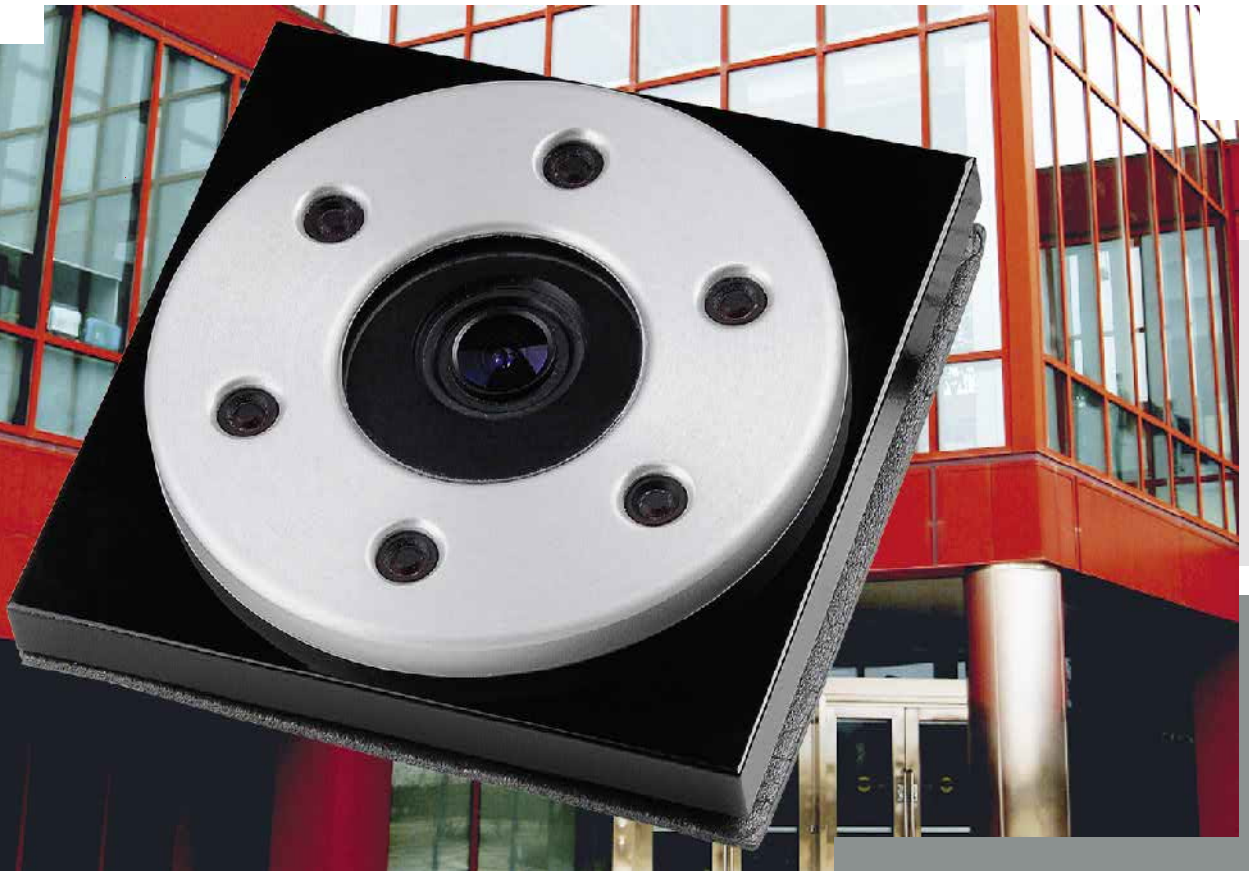


IP video solutions for
door intercoms in multiple versions.



- Video over IP
- Modular system
- Image display in the web browser
- Use of existing networks



Baudisch.CP-CAM Overview



01 Compact design: Ideal to use in the entrance area

The IP camera module CP-CAM from Baudisch is one of the most compact solutions for the capture of high quality images and its direct distribution per Ethernet.

The CMOS sensor, the lens and a powerful processor with network connection as well as a PoE power supply are placed on a single PCB only measuring 50 x 47 mm.

This space-saving design allows the implementation of a variety of designs and product integration, which previously required 2 separate components (analog camera and IP image converter).

Without further additional components, colour videos can simultaneously be accessed from multiple PCs on the network.

Built-in IR spotlights allow operation at night. Persons and objects in front of the camera are illuminated well even in total darkness.

Simply a network cable must be fed for the connection which then provides the power supply.

02 Performance features

The camera provides a web interface for the setup and operation. It can be preinstalled in the languages German, English, French and Italian.

- Motion JPG in VGA resolution (640 x 480 pixel)
- JAVA plugin for video display with every browser
- Single image transfer via HTTP as JPG
- Simultaneous access of several PCs possible
- Automatic BW / colour change-over
- Night vision due to IR function
- Power supply via PoE endspan or 24V DC

03 Baudisch.CP-CAM panel mounting IP65 Mounting from the rear side of the front panels, casings or facade elements

The solid aluminium housing design is simply inserted from the rear side of a customer front panel through a round opening (diameter 65 mm) and attached to welding studs on this panel. A circular seal prevents water entry.

Protection class: IP65 from all sides
Dimensions: 98.0 x 98.0 x 37.5 mm plus 15 mm for the cable outlet
Weight: 360 g
Article number: [33-0896](#) (light anodised), [33-0896B](#) (black anodised)



04 Baudisch.CP-CAM Steel Modular unit with V4A panel for use in columns and systems of many manufacturers

This unit is inserted from the front in an opening or slot and bolted on the back side. The slim design is not vulnerable of manipulation making it suitable for vandal resistant applications.

Protection class: IP65 on the front
Dimensions: 109.5 x 109.5 x 43.0 mm
Weight: 280 g
Article number: [33-1001](#) (base product) [33-1121](#) (front panel set V4A)



05 Baudisch.CP-CAM Vario Suitable for installation in the Vario system from the company Siedle

The camera is integrated in a Siedle dummy module. The product can be supplied with a basic housing in the current colour from the company Siedle. The infrared section is uniformly designed in light anodised colours.

Protection class:	IP54 on the front	Colour codes:
Dimensions:	99 x 99 x 39 mm	W white
Weight:	280 g	S silver metallic
Article number:	33-0879 ^[COLORCODE]	A black high gloss
		H white high gloss
		B amber glimmer
		D dark grey glimmer





Baudisch.CP-CAM OEM kit and technology



06 Baudisch.CP-CAM modular kit OEM Assembly set for installation in object specific solutions

The camera technology is modular and can be integrated into various housing solutions. This parts kit is suitable for installation in existing systems.

Protection class: none
Dimensions: on request
Weight: on request
Article number: [33-0894X](#)

The standard delivery includes:

- camera module
- IR capable lens
- IR spotlight board
- IR panel and glass panel
- connection cable



07 Technical data of all designs

Camera: VGA Color CMOS Image Sensor

Object lens: 2.5 mm f1:2.0 with fixed aperture 2.0, focussing range 20 cm to infinity, viewing angle: horizontal approx. 83°, vertical approx. 65°, diagonal approx. 111°

Resolution: colour image adjustable up to 640 x 480 (VGA), hardware-based JPEG compression with max. 25 images per second with QVGA

Network: 100BaseTX Ethernet interface, built-in web server, multiple PCs can access simultaneously

Connection: all versions are delivered with a plug-in patch cable 0.25 meter, 2 digital inputs or outputs for switching options on free cores of the network line possible

CE mark: EMC tested to EN55011 and EN500082-1

Temperature range: -20 °C to +55 °C
(-20°C after 15 minutes running time)

Protection class: weatherproof IP54 or IP65 dependent of the housing design and installation situation

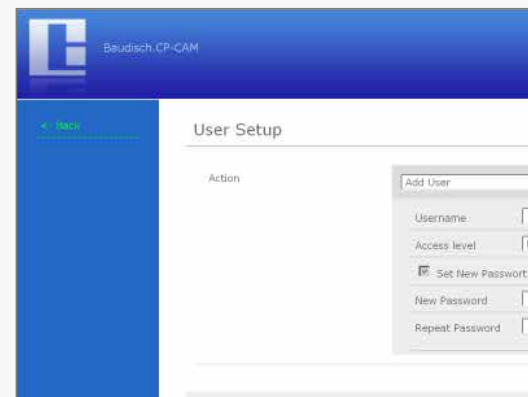
PoE supply: class 1, endspan (voltage is fed to the 4 data cables), midspan (PoE on free cores) is not available

Operational voltage: 24 VDC direct supply (20-36 V) on 2 free data cables as an alternative to PoE

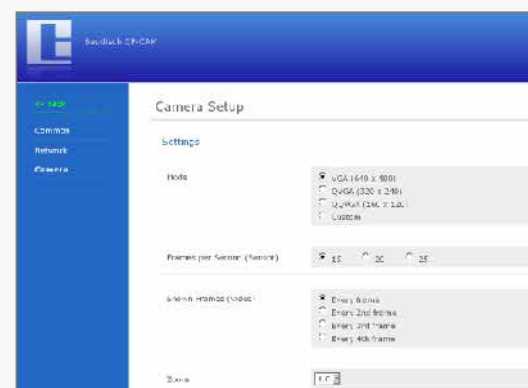
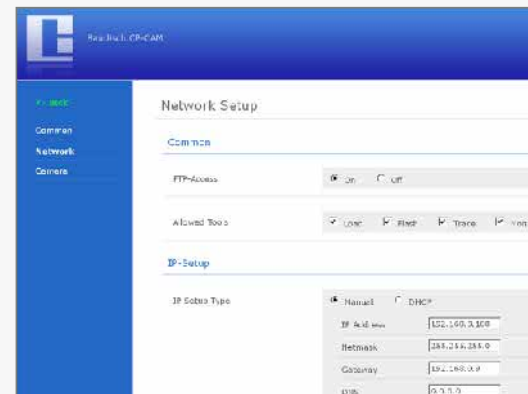
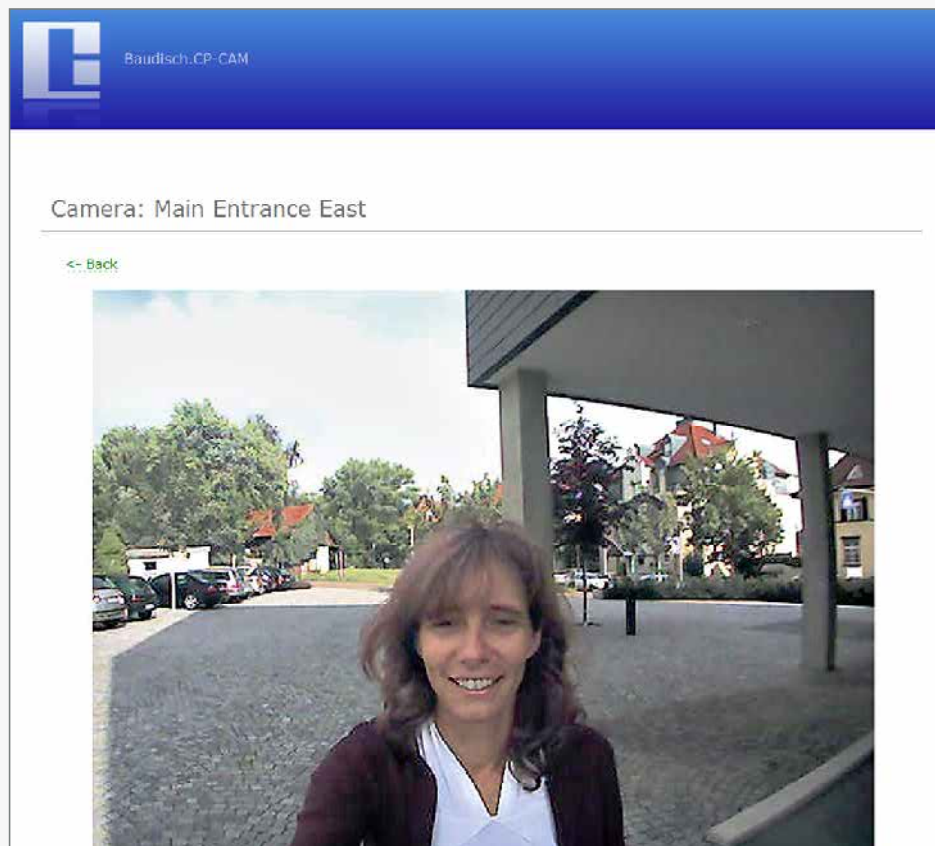
Power: maximum 3 VA

08 Software features

- Display:** in the web browser by means of JAVA plug-in via motion JPG, with which image rotation is possible in 90° steps, individual frame mode over HTTP protocol in JPG format
- Configuration:** using web browser following authentication, user administration, 3 authorisation categories, adjustment of image size, zoom, quality and digital pan (panel position), entry of a name and network properties for each camera
- Night vision:** automatic switching-on of the IR function to night-time mode below adjustable brightness value
- Remote control:** 2 digital ports can be configured and controlled as switching outputs or digital inputs
- UDP status:** Status messages via UDP allow the operation of an automatic pop-up software in conjunction with our SIP DoorStations



09 Sample images in the web browser





10 Baudisch.SIP VideoClient

As an alternative to video display in a web browser, this software enables in connection with the Baudisch.Door-Station the automatic display (pop-up) of the door video image on the PC screen.

The door can be opened by clicking a button displayed on the screen. It is also easily possible to directly save individual frame images as a JPG file on the hard drive with a click or even automatically when the door is opened.



Article number: 36-0204

11 SNOM IP telephone with TFT display

With the desktop phone snom 820, 821 and 870, the video image of the CP-CAM can be directly displayed in the phone display.

The image of the required camera can be connected at any time using the phone's speed dialling keys. If the SIP server has a suitable function or in case of direct configuration without SIP server, this is also possible automatically in the call state.



12 Control station technology and systems

The Baudisch.CP-CAM has been tested with several system solutions and is software compatible with for example:

- Geutebrück GeViScope
- Telekom Octopus NetPhone
- DIVUS Domus
- Trix Box PBX Phone Systems

13 LAN secure adapter Safeguarding of outdoor IP supply cables of cameras and intercoms

When IP components are installed in public areas it is necessary to ensure that in the event of sabotage, it is not possible to access data in the company's Intranet via the external network cable.

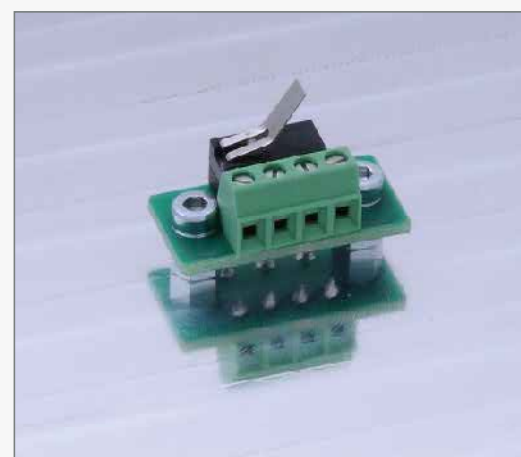
This is achieved by installing the LAN secure adapter between the camera and the network (switch) in conjunction with a sabotage contact in the housing of the intercom or in the camera installation site.

The adapter monitors up to two sabotage contacts for interruption, short-circuit and current differences according to the closed current loop principle. In the event of irregularities, the devices triggers a sabotage alarm.

In case of sabotage the network cable is completely isolated. Another output enables a fault signal to be sent to the building services control system and the power supply to outdoor devices to be switched off.

The sabotage shutdown must be reset by pressing a button at the LAN secure adapter.

Connections: Push-fit screw terminals and LSA+ (switched parallel)
 Protection class: None, open sub-assembly for control cabinet installation
 Dimensions: 110 x 85 x 50 mm
 Weight: 120 g
 Article number: [33-0216](#)



14 CP-CAM supply interface / IO interface Discrete power supply, use of the digital inputs and outputs of the CP-CAM

If the CP-CAM is not to be supplied over PoE but conventionally with 24 VDC instead, this module allows simple looping of the power supply to the free cores of the Ethernet supply (supply interface).

In the fully equipped version (IO interface), both the digital ports of the camera can additionally be used for the control of 2 relay contacts (24V, 1A) or as inputs with pre-switched opto-couplers.

Protection class: None, open sub-assembly for control cabinet installation
 Dimensions: 110 x 85 x 50 mm
 Weight: 120 g
 Article number: [33-0901](#) (IO interface incl. 24V supply)
[33-0901E](#) (supply interface without I/O functions)





Baudisch Electronic

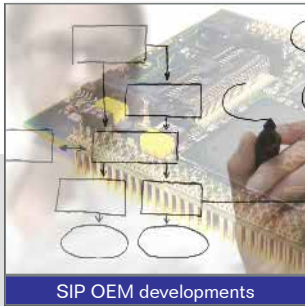
Baudisch. Communication&Security

An astonishingly wide range of possibilities.

Made in Germany.



SIP door communication



SIP OEM developments



IP video door cameras



RoomControl - door name plates



Visitor CommunicationPanel



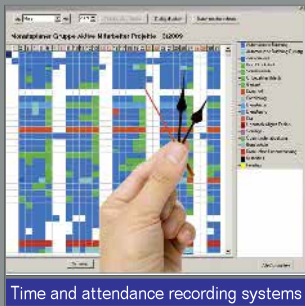
RFID access control

We would be pleased to advise you about these other products of our firm.

Simply contact us.



Control station solutions



Time and attendance recording systems



Watchmen's control systems



RFID solutions for prisons

Baudisch Electronic GmbH

Im Gewerbegebiet 7 - 9
D - 73116 Wäschenbeuren

Phone: +49 (0)7172/92613-0
Fax: +49 (0)7172/92613-30
Web: www.baudisch.de
Mail: vertrieb@baudisch.de